

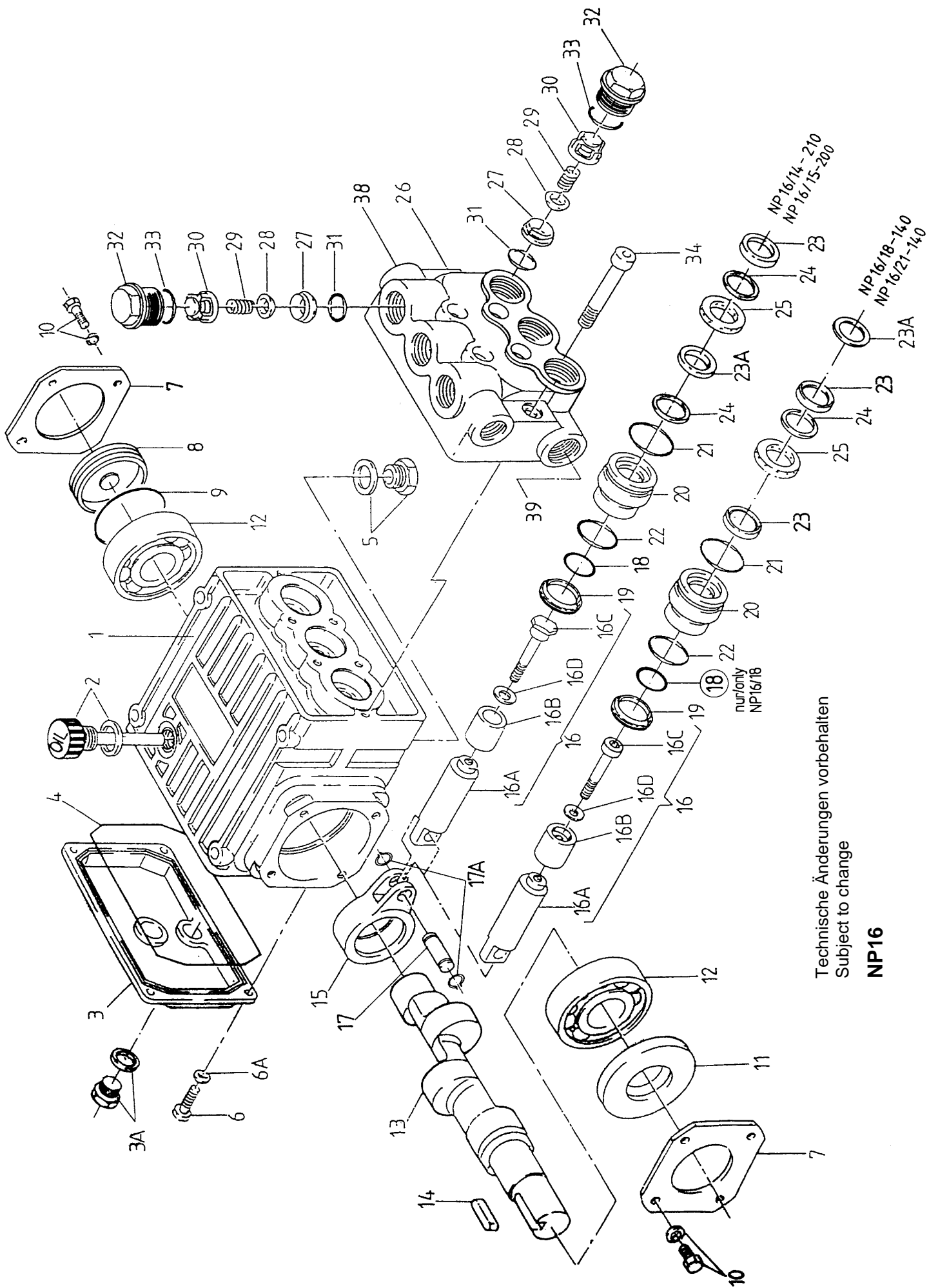
Ersatzteilverzeichnis
Spare Parts List

NP16/14-210
NP16/15-210
NP16/18-140
NP16/21-140

Best.-Nr.: 00.5089
Code Nr. 00.5090
00.5091
00.5092

Lfd. Nr. Item No.	Stückzahl No. Off	Best.-Nr. Code No.	Benennung	Description
1	1	01.0566	Antriebsgehäuse	Crankcase
2	1	00.4011	Ölmeßstab	Oil Dipstick
2	1	00.4049	Ölmeßstab NP16/14	Oil Dipstick NP16/14
3	1	03.0223	Getriebedeckel	Crankcase Cover
3A	1	00.2372	Ölablaßstopfen	Oil Drain Plug
4	1	06.0539	O-Ring	O-Ring
5	1	00.3842	Stopfen G3/8	Plug G3/8
6	4	21.0069	Zylinderschraube	Cylinder Screw
6A	4	07.3052	Federring	Spring Washer
7	2	03.0229	Lagerdeckel	Bearing Cover
8	1	07.3248	Ölschauglas	Oil Sight Glass
9	1	06.0249	O-Ring	O-Ring
10	8	21.0028	Sechskantschraube	Hexagon Screw
11	1	06.0883	Radialwellendichtung	Radial Shaft Seal
12	2	05.0078	Rillenkugellager	Grooved Ball Bearing
13	1	11.0520	Kurbelwelle NP16/15, NP16/18	Crankshaft NP16/15, NP16/18
13	1	11.0551	Kurbelwelle NP16/21	Crankshaft NP16/21
13	1	11.0569	Kurbelwelle NP16/14	Crankshaft NP16/14
14	1	07.3049	Paßfeder	Woodruff Key
15	3	16.0036	Gleitlagerpleuel	Connecting Rod
16	3	00.3835	Plunger kpl. NP16/14, NP16/15	Plunger Assy NP16/14, NP16/15
16	3	00.3847	Plunger kpl. NP16/18, NP16/21	Plunger Assy NP16/18, NP16/21
16A	3	11.0568	Plunger	Plunger
16B	3	11.0589	Plungerrohr NP16/14, NP16/15	Plunger Pipe NP16/14, NP16/15
16B	3	11.0614	Plungerrohr NP16/18, NP16/21	Plunger Pipe NP16/18, NP16/21
16C	3	21.0351	Spannschraube NP16/14, NP16/15	Tension Screw NP16/14, NP16/15
16C	3	21.0055	Spannschraube NP16/18, NP16/21	Tension Screw NP16/18, NP16/21
16D	3	06.0306	Cu-Dichtring NP16/14, NP16/15	Copper Washer NP16/14, NP16/15
16D	3	06.0096	Cu-Dichtring NP16/18, NP16/21	Copper Washer NP16/18, NP16/21
17	3	11.0714	Kreuzkopfbolzen	Crosshead Pin
17A	6	07.3721	Seegerring	Clip Ring
18	3	06.1164	O-Ring NP16/14, NP16/15, NP16/18	O-Ring NP16/14, NP16/15, NP16/18
o•19	3	06.1081	Doppellippendichtung	Double Lip Seal
20	3	07.2993	Dichtungsaufnahme NP16/14, NP16/15	Seal Adaptor NP16/14, NP16/15
20	3	07.2842	Dichtungsaufnahme NP16/18, NP16/21	Seal Adaptor NP16/18, NP16/21
o•21	3	06.1183	O-Ring	O-Ring
o•22	3	06.0279	O-Ring	O-Ring
•23	3	06.1174	Nutring NP16/14, NP16/15 (schwarz)	Grooved Seal NP16/14, NP16/15 (black)
o23	6	06.1436	Nutring NP16/18, NP16/21	Grooved Seal NP16/18, NP16/21
•23A	3	06.1297	Nutring NP16/14, NP16/15 (braun)	Grooved Seal NP16/14, NP16/15 (brown)
23A	3	07.2843	Distanzscheibe NP16/18, NP16/21	Spacer Disc NP16/18, NP16/21
•24	6	07.2116	Stützring NP16/14, NP16/15	Support Ring NP16/14, NP16/15
o24	3	07.2717	Stützring NP16/18, NP16/21	Support Ring NP16/18, NP16/21
25	3	07.2515	LRF-Ring NP16/14, NP16/15	LRF-Ring NP16/14, NP16/15
25	3	07.2841	LRF-Ring NP16/18, NP16/21	LRF-Ring NP16/18, NP16/21
26	1	01.0781	Ventilgehäuse NP16/14, NP16/15	Valve Casing NP16/14, NP16/15
26	1	01.0792	Ventilgehäuse NP16/18, NP16/21	Valve Casing NP16/18, NP16/21
••27	6	07.1650	Ventilsitz	Valve Seat
••28	6	07.2173	Ventilplatte	Valve Plate
••29	6	07.2544	Ventilfeder	Valve Spring
••30	6	07.2157	Federspannschale	Spring Tension Cap
••31	6	06.0078	O-Ring	O-Ring
32	6	07.3557	Stopfen	Plug
••33	6	06.0758	O-Ring	O-Ring
34	6	21.0346	Innensechskantschraube	Inner Hexagon Screw
38	1	07.0608	Stopfen G3/8	Plug G3/8
39	1	07.0705	Stopfen G1/2	Plug G1/2
	1	00.5114	Antrieb NP16/14(1-22/23A/3x24/34)	Gear NP16/14 (1-22/23A/3x24/34)
	1	00.4248	Antrieb NP16/15(1-22/23A/3x24/34)	Gear NP16/15 (1-22/23A/3x24/34)
	1	00.3910	Antrieb NP16/18(1-22,3x23/34)	Gear NP16/18 (1-22,3x23/34)
	1	00.3911	Antrieb NP16/21(1-22,3x23/34)	Gear NP16/21 (1-22,3x23/34)
	1	00.5094	Pumpenkopf kpl. NP16/14, NP16/15 (23/3x24/25-33/38/39)	Pump Head Assy NP16/14, NP16/15 (23/3x24/25-33/38/39)
	1	00.5095	Pumpenkopf kpl. NP16/18, NP16/21 (3x23/23A-33/38/39)	Pump Head Assy NP16/18, NP16/21 (3x23/23A-33/38/39)
	6	00.1909	Ventil kpl. (27-30)	Valve Assy (27-30)
•	1	14.0454	Rep. Satz Dichtungen NP16/14, NP16/15	Seal Repair Kit NP16/14, NP16/15
o	1	14.0406	Rep. Satz Dichtungen NP16/18, NP16/21	Seal Repair Kit NP16/18, NP16/21
••	1	14.0364	Rep.Satz Ventile	Valve Repair Kit

Bei Bestellung von Ersatzteilen bitte Bestell-Nr., Pumpen-Nr. und -type angeben
When ordering please state Code No., Pump Model and Pump Serial No.



Technische Änderungen vorbehalten
 Subject to change

NP16

NP 16/14-210
 NP 16/15-200

NP 16/18-140
 NP 16/21-140

not only
 NP16/18