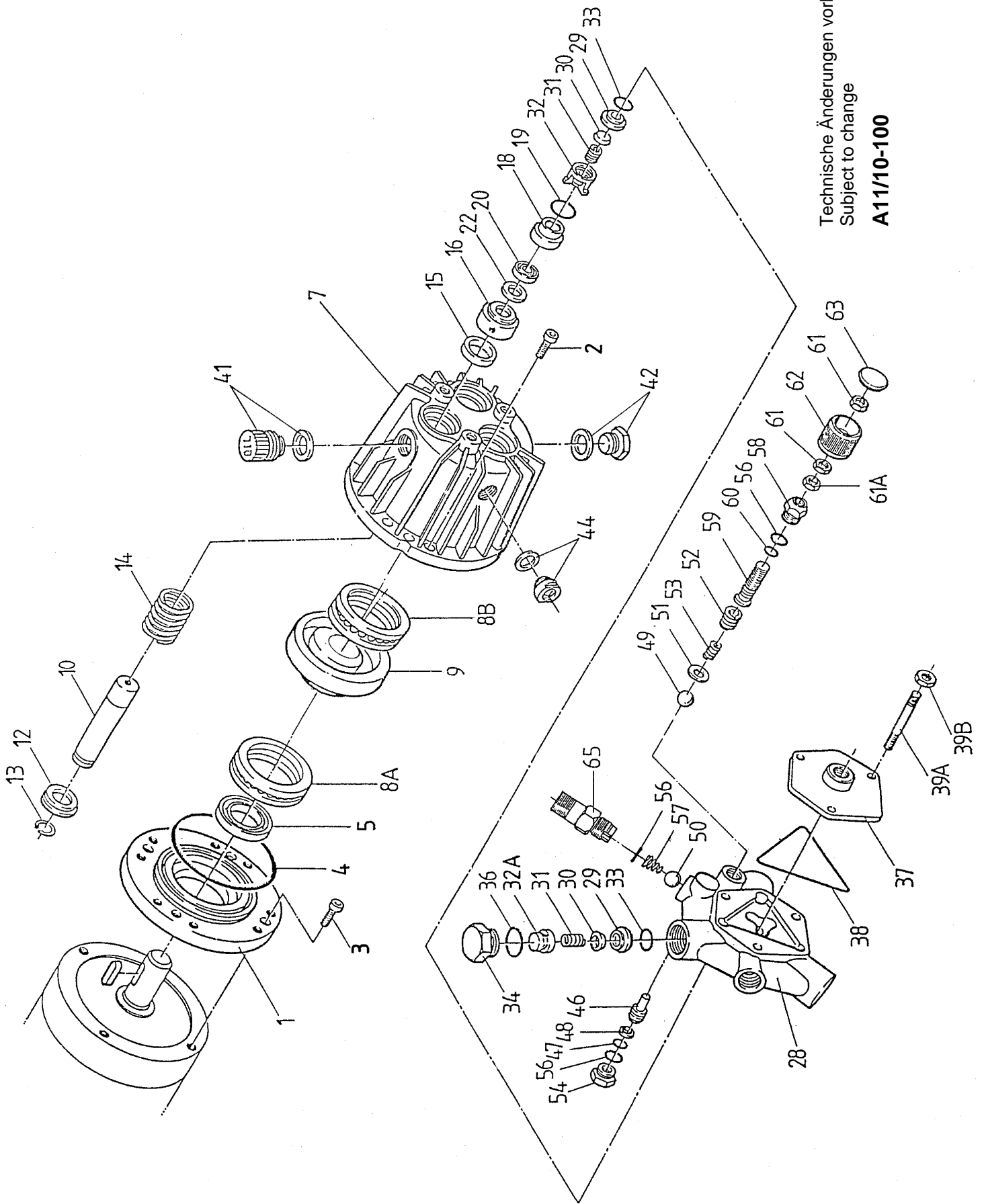


| Lfd. Nr.<br>Item No. | Stückzahl<br>No. Off | Best.-Nr.<br>Code No. | Benennung                  | Description                  |
|----------------------|----------------------|-----------------------|----------------------------|------------------------------|
| 1                    | 1                    | 20.0125               | Motorflansch               | Motor Flange                 |
| 2                    | 8                    | 21.0336               | Innensechskantschraube     | Inner Hexagon Screw          |
| 3                    | 4                    | 21.0304               | Innensechskantschraube     | Inner Hexagon Screw          |
| 4                    | 1                    | 06.0104               | O-Ring                     | O-Ring                       |
| 5                    | 1                    | 06.0714               | Radialwellendichtring      | Radial Shaft Seal            |
| 7                    | 1                    | 01.0522               | Antriebsgehäuse            | Crankcase                    |
| 8A                   | 1                    | 05.0134               | Axialrillenkugellager      | Axial Grooved Ball Bearing   |
| 8B                   | 1                    | 05.0135               | Axialrillenkugellager      | Axial Grooved Ball Bearing   |
| 9                    | 1                    | 00.2215               | Taumelscheibe kpl.         | Wobble Plate Assy            |
| 10                   | 3                    | 11.0530               | Plunger                    | Plunger                      |
| 12                   | 3                    | 07.1773               | Federführung               | Spring Guide                 |
| 13                   | 3                    | 07.1835               | Sprengring                 | Retainer Ring                |
| 14                   | 3                    | 07.2921               | Druckfeder                 | Pressure Spring              |
| o15                  | 3                    | 06.1081               | Doppellippendichtung       | Double-Lip Seal              |
| 16                   | 3                    | 07.2114               | Abstandsring               | Spacer Ring                  |
| 18                   | 3                    | 07.2115               | Dichtungsaufnahme          | Seal Adaptor                 |
| o19                  | 3                    | 06.0755               | O-Ring                     | O-Ring                       |
| o20                  | 3                    | 06.1297               | Nutring braun              | Grooved Seal brown           |
| o22                  | 3                    | 07.2116               | Stützring                  | Support Ring                 |
| 28                   | 1                    | 01.0523               | Ventilgehäuse              | Valve Casing                 |
| ••29                 | 6                    | 07.1650               | Ventilsitz                 | Valve Seat                   |
| ••30                 | 6                    | 07.2173               | Ventilplatte               | Valve Plate                  |
| ••31                 | 6                    | 07.2544               | Ventilfeder                | Valve Spring                 |
| ••32                 | 3                    | 07.2172               | Federspannschale Saug      | SpringTension Cap Suction    |
| ••32A                | 3                    | 07.2157               | Federspannschale Druck     | Spring Tension Cap Pressure  |
| ••33                 | 6                    | 06.0078               | O-Ring                     | O-Ring                       |
| 34                   | 3                    | 07.2117               | Stopfen                    | Plug                         |
| ••36                 | 3                    | 06.0758               | O-Ring                     | O-Ring                       |
| 37                   | 1                    | 20.0118               | Saugflansch                | Suction Flange               |
| o38                  | 1                    | 06.0759               | O-Ring                     | O-Ring                       |
| 39A                  | 3                    | 21.0306               | Stiftschraube              | Stud Bolt                    |
| 39B                  | 3                    | 07.3001               | Sechskantmutter            | Hexagon Nut                  |
| 41                   | 1                    | 00.2413               | Ölauffüllstopfen kpl.      | Oil Filler Plug Assy         |
| 42                   | 1                    | 00.3842               | Ölablaßstopfen kpl.        | Oil Drain Plug Assy          |
| 44                   | 1                    | 00.3510               | Ölschauglas kpl.           | Oil Sight Glass Assy         |
| 46                   | 1                    | 07.2375               | Kolbenkörper               | PistonBody                   |
| •47                  | 1                    | 06.0760               | O-Ring                     | O-Ring                       |
| •48                  | 1                    | 06.0782               | Stützring für O-Ring       | Support Ring                 |
| •49                  | 1                    | 07.1139               | Bypassventilkugel          | Bypass Ball                  |
| •50                  | 1                    | 07.2472               | Rückschlagventilkugel      | Kick-Back Valve Ball         |
| 51                   | 1                    | 07.2327               | Unterlegscheibe            | Disc                         |
| 52                   | 1                    | 07.2120               | Druckfeder                 | Pressure Spring              |
| 53                   | 1                    | 07.2420               | Druckfeder                 | Pressure Spring              |
| 54                   | 1                    | 07.2376               | Führungsstopfen            | Guide Plug                   |
| •56                  | 3                    | 06.0244               | O-Ring                     | O-Ring                       |
| •57                  | 1                    | 07.1554               | Rückschlagventilfeder      | Kick-Back Valve Spring       |
| 58                   | 1                    | 07.2326               | Stellstopfen               | Adjusting Plug               |
| 59                   | 1                    | 07.2325               | Stellschraube              | Adjusting Screw              |
| •60                  | 1                    | 06.0816               | O-Ring                     | O-Ring                       |
| 61                   | 2                    | 07.1616               | Sechskantmutter            | Hexagon Nut                  |
| 61A                  | 1                    | 07.3001               | Sechskantmutter            | Hexagon Nut                  |
| 62                   | 1                    | 07.2454               | Handrad                    | Hand Wheel                   |
| 63                   | 1                    | 07.2466               | Verschlußdeckel            | Cover                        |
| 65                   | 1                    | 07.1910               | Anschlußstutzen            | Connecting Branch            |
|                      | 1                    | 00.1908               | Ventil kpl. Saug (29-32)   | Valve Assy Suction (29-32)   |
|                      | 1                    | 00.1909               | Ventil kpl. Druck (29-32A) | Valve Assy Pressure (29-32A) |
|                      | 1                    | 25.0063               | Getriebeöl                 | Transmission Oil             |
| ••                   | 1                    | 14.0306               | Rep. Satz Ventile          | Valve Repair Kit             |
| o                    | 1                    | 14.0307               | Rep. Satz Dichtungen       | Seal Repair Kit              |
| •                    | 1                    | 14.0349               | Rep. Satz UL               | Unloader Repair Kit          |

Bei Bestellung von Ersatzteilen bitte Bestell-Nr., Pumpen-Nr. und -type angeben  
 When ordering please state Code No., Pump Model and Pump Serial No.



Technische Änderungen vorbehalten  
 Subject to change

**A111/10-100**