

Ersatzteilverzeichnis NP10/4-140V
Spare Parts List

i Leistungsbereich - Performance

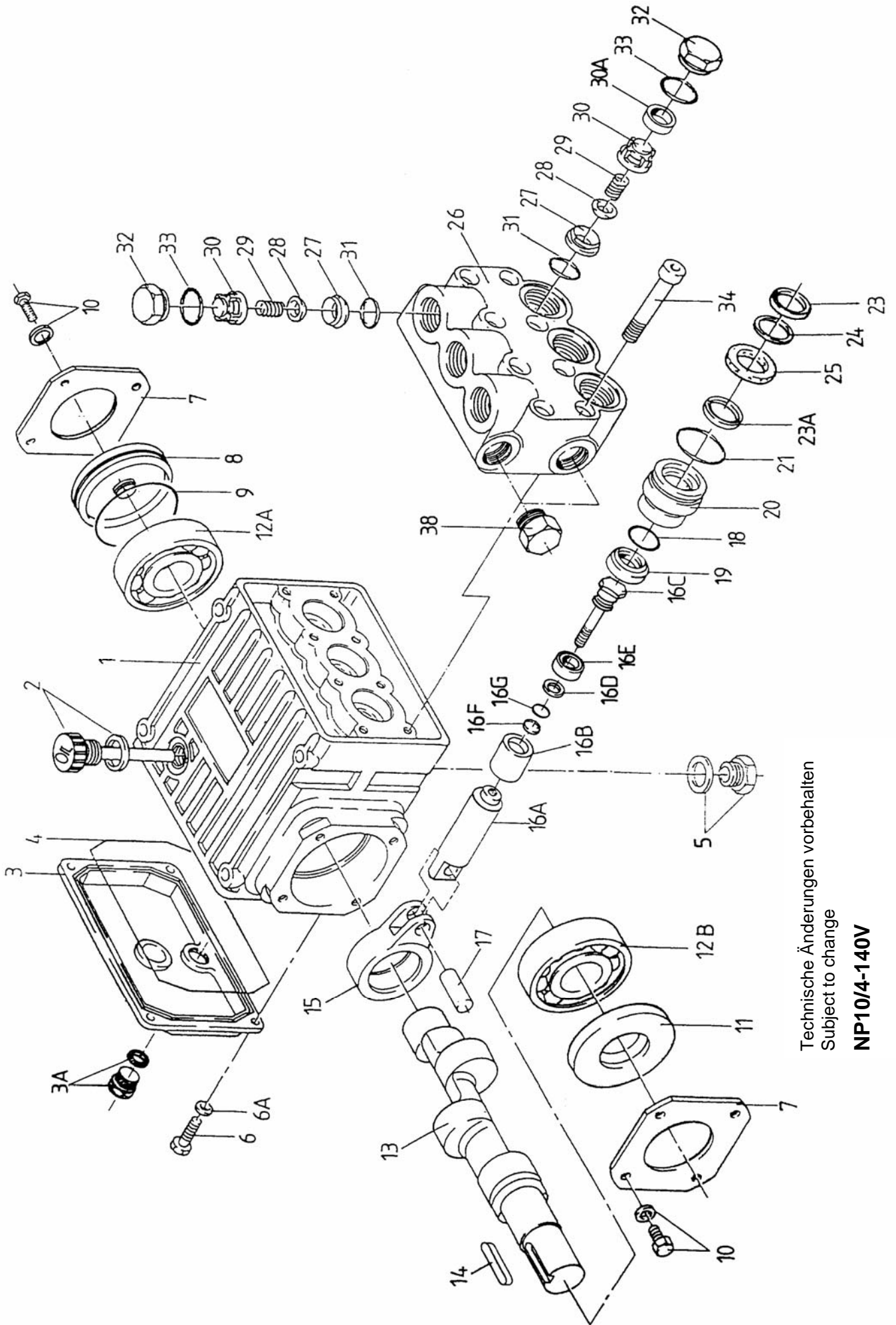
| Type | Best.-Nr. | Leistungs- aufnahme | Überdruck max. | Drehzahl max. | Förder- menge max. | Wasser temp. max. | Plunger -Ø | Hub | Gewicht ca. | NPSHR |
|-------------|-----------|------------------------|-------------------|-------------------|--------------------------|-------------------------|-----------------|--------|-------------------|------------------|
| | Code No. | Power Consump. | Pressure max. | RPM max. | Output max. | Water- Temp. max. | Plunger dia. | Stroke | Weight approx. | NPSH Required |
| | | kW | bar | min ⁻¹ | l/min | °C | mm | mm | kg | mWs |
| NP10/4-140V | 00.6056 | 1.0 | 140 | 1450 | 3.4 | 70 | 18 | 3.4 | 6.0 | -- |

Für Inbetriebnahme, Wartung, Sicherheitsvorschriften und Instandsetzung beachten Sie die Betriebsanleitung der Standardpumpen NP10.

Please refer to the operating instructions for the standard NP10 pumps with regard to operation, maintenance, safety guidelines and repair.

| Lfd. Nr. Item No. | Stückzahl No. Off | Best.-Nr. Code No. | Benennung | Description |
|----------------------|----------------------|-----------------------|---|---|
| 1 | 1 | 01.0858 | Antriebsgehäuse | Crankcase |
| 2 | 1 | 00.4011 | Ölmeßstab | Oil Dipstick |
| 3 | 1 | 03.0326 | Getriebedeckel | Crankcase Cover |
| 3A | 1 | 00.2372 | Ölablaßstopfen kpl. | Oil Drain Plug Assy |
| 4 | 1 | 06.0050 | O-Ring | O-Ring |
| 5 | 1 | 00.3842 | Stopfen kpl. | Plug Assy |
| 6 | 4 | 21.0069 | Zylinderschraube | Cylinder Screw |
| 6A | 4 | 07.3052 | Federring | Spring Washer |
| 7 | 2 | 03.0229 | Lagerdeckel | Bearing Cover |
| 8 | 1 | 07.3065 | Ölschauglas | Oil Sight Glas |
| 9 | 1 | 06.0964 | O-Ring | O-Ring |
| 10 | 8 | 21.0028 | Sechskantkombischraube | Hexagon Screw |
| 11 | 1 | 06.0057 | Radialwellendichtring | Radial Shaft Seal |
| 12A | 1 | 05.0076 | Rillenkugellager | Ball Bearing |
| 12B | 1 | 05.0077 | Rillenkugellager | Ball Bearing |
| 13 | 1 | 11.0591 | Kurbelwelle | Crankshaft |
| 14 | 1 | 07.3049 | Paßfeder | Fitting Key |
| 15 | 3 | 16.0036 | Gleitlagerpleuel | Connecting Rod |
| 16A | 3 | 11.0611 | Plunger | Plunger |
| 16B | 3 | 11.0589 | Plungerrohr | Plunger Pipe |
| 16C | 3 | 21.0351 | Spannschraube | Tension Screw |
| 16D | 3 | 06.0305 | Stahl Dichtr. (beids. LOC577 auftragen) | Steel Ring (coat on both sides with LOC577) |
| 16E | 3 | 07.3709 | Plungerverlängerung | Plunger Extension |
| 16F | 3 | 06.0114 | Stützring für O-Ring | Support Ring f. O-Ring |
| 16G | 3 | 06.0113 | O-Ring | O-Ring |
| 17 | 3 | 11.0585 | Kreuzkopfbolzen | Crosshead Pin |
| 18 | 3 | 06.1164 | O-Ring | O-Ring |
| •19 | 3 | 06.1081 | Getriebedichtung | Gear Seal |
| 20 | 3 | 07.2798 | Dichtungsaufnahme | Seal Adaptor |
| •21 | 3 | 06.1271 | O-Ring | O-Ring |
| •23 | 3 | 06.1174 | Nutring (schwarz) | Grooved Seal (black) |
| •23A | 3 | 06.1297 | Nutring (braun) | Grooved Seal (brown) |
| •24 | 3 | 07.2116 | Stützring | Support Ring |
| 25 | 3 | 07.2797 | LRF-Ring | Drip Return Ring |
| 26 | 1 | 01.0632 | Ventilgehäuse | Valve Casing |
| ••27 | 6 | 07.1650 | Ventilsitz | Valve Seat |
| ••28 | 6 | 07.2173 | Ventilplatte | Valve Plate |
| ••29 | 6 | 07.4073 | Ventilfeder | Valve Spring |
| ••30 | 6 | 07.2157 | Federspannschale | Spring Tension Cap |
| 30A | 3 | 07.3708 | Distanzring | Spacer Ring |
| ••31 | 6 | 06.0943 | O-Ring | O-Ring |
| 32 | 6 | 07.2117 | Stopfen | Plug |
| ••33 | 6 | 06.0944 | O-Ring | O-Ring |
| 34 | 8 | 21.0356 | Innensechskantschraube | Hexagon Screw |
| 38 | 2 | 07.0608 | Stopfen G3/8 | Plug G3/8 |
| | | 00.5354 | Antrieb kpl. (1-21,23A,34) | Gear Assy (1-21,23A,34) |
| | | 00.6086 | Pumpenkopf kpl. (23/24-33/38) | Pump Head Assy (23/24-33/38) |
| | | 00.5465 | Ventil kpl. (27-30) | Valve Assy (27-30) |
| • | | 14.0772 | Rep. Satz Dichtungen | Seal Repair Kit |
| •• | | 14.0773 | Rep. Satz Ventile | Valve Repair Kit |

Bei Bestellung von Ersatzteilen bitte Bestell-Nr., Pumpen-Nr. und -type angeben
 When ordering please state Code No., Pump Model and Pump Serial No.



Technische Änderungen vorbehalten
 Subject to change

NP10/4-140V