



**Leistungsbereich - Performance**

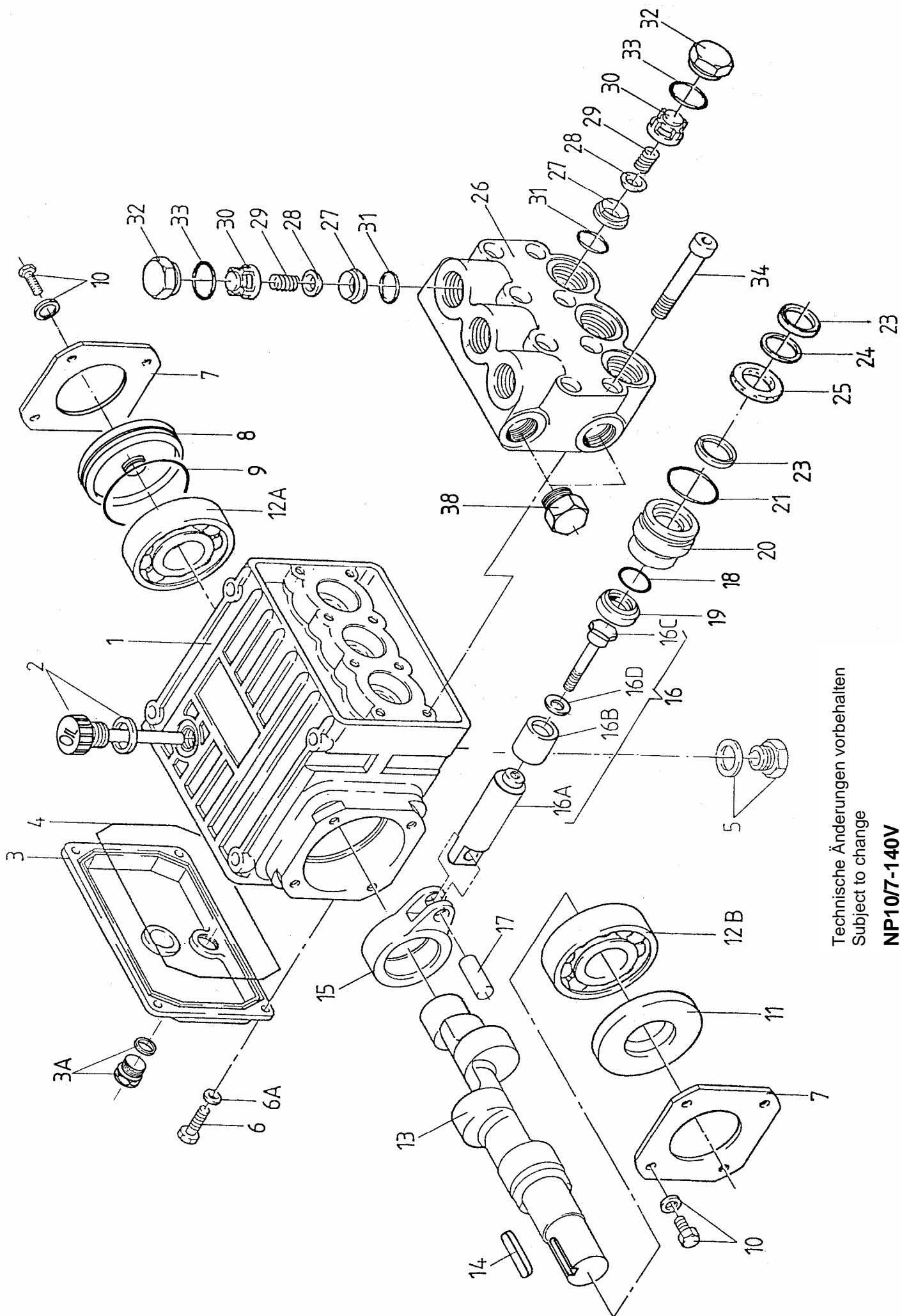
| Type        | Best.-Nr.   | Leistungs-<br>aufnahme | Überdruck<br>max. | Drehzahl<br>max.  | Förder-<br>menge<br>max. | Wasser<br>temp.<br>max. | Plunger<br>-Ø   | Hub    | Gewicht<br>ca.    | NPSHR            |
|-------------|-------------|------------------------|-------------------|-------------------|--------------------------|-------------------------|-----------------|--------|-------------------|------------------|
|             | Code<br>No. | Power<br>Consump.      | Pressure<br>max.  | RPM<br>max.       | Output<br>max.           | Water-<br>Temp.<br>max. | Plunger<br>dia. | Stroke | Weight<br>approx. | NPSH<br>Required |
|             |             | kW                     | bar               | min <sup>-1</sup> | l/min                    | °C                      | mm              | mm     | kg                | mWs              |
| NP10/7-140V | 00.6057     | 2.1                    | 140               | 1450              | 7.4                      | 70                      | 18              | 7.0    | 5.4               | --               |

**Für Inbetriebnahme, Wartung, Sicherheitsvorschriften und Instandsetzung beachten Sie die Betriebsanleitung der Standardpumpen NP10.**

**Please refer to the operating instructions for the standard NP10 pumps with regard to operation, maintenance, safety guidelines and repair.**

| Lfd. Nr.<br>Item No. | Stückzahl<br>No. Off | Best.-Nr.<br>Code No. | Benennung                     | Description                  |
|----------------------|----------------------|-----------------------|-------------------------------|------------------------------|
| 1                    | 1                    | 01.0858               | Antriebsgehäuse               | Crankcase                    |
| 2                    | 1                    | 00.4011               | Ölmeßstab                     | Oil Dipstick                 |
| 3                    | 1                    | 03.0326               | Getriebedeckel                | Crankcase Cover              |
| 3A                   | 1                    | 00.2372               | Ölablaßstopfen kpl.           | Oil Drain Plug Assy          |
| 4                    | 1                    | 06.0050               | O-Ring                        | O-Ring                       |
| 5                    | 1                    | 00.3842               | Stopfen kpl.                  | Plug Assy                    |
| 6                    | 4                    | 21.0069               | Zylinderschraube              | Cylinder Screw               |
| 6A                   | 4                    | 07.3052               | Federring                     | Spring Washer                |
| 7                    | 2                    | 03.0229               | Lagerdeckel                   | Bearing Cover                |
| 8                    | 1                    | 07.3065               | Ölschauglas                   | Oil Sight Glas               |
| 9                    | 1                    | 06.0964               | O-Ring                        | O-Ring                       |
| 10                   | 8                    | 21.0028               | Sechskantkombischraube        | Hexagon Screw                |
| 11                   | 1                    | 06.0057               | Radialwellendichtring         | Radial Shaft Seal            |
| 12A                  | 1                    | 05.0076               | Rillenkugellager              | Ball Bearing                 |
| 12B                  | 1                    | 05.0077               | Rillenkugellager              | Ball Bearing                 |
| 13                   | 1                    | 11.0689               | Kurbelwelle                   | Crankshaft                   |
| 14                   | 1                    | 07.3049               | Paßfeder                      | Fitting Key                  |
| 15                   | 3                    | 16.0036               | Gleitlagerpleuel              | Connecting Rod               |
| 16                   | 3                    | 00.3640               | Plunger kpl. Ø18              | Plunger Assy 18mm dia.       |
| 16A                  | 3                    | 11.0611               | Plunger                       | Plunger                      |
| 16B                  | 3                    | 11.0589               | Plungerrohr                   | Plunger Pipe                 |
| 16C                  | 3                    | 21.0351               | Spannschraube                 | Tension Screw                |
| 16D                  | 3                    | 06.0306               | Cu-Dichtring                  | Copper Washer                |
| 17                   | 3                    | 11.0585               | Kreuzkopfbolzen               | Crosshead Pin                |
| 18                   | 3                    | 06.1164               | O-Ring                        | O-Ring                       |
| •19                  | 3                    | 06.1081               | Getriebedichtung              | Gear Seal                    |
| 20                   | 3                    | 07.2798               | Dichtungsaufnahme             | Seal Adaptor                 |
| •21                  | 3                    | 06.1271               | O-Ring                        | O-Ring                       |
| •23                  | 6                    | 06.1288               | Nutring                       | Grooved Seal                 |
| •24                  | 3                    | 07.2116               | Stützring                     | Support Ring                 |
| 25                   | 3                    | 07.2797               | LRF-Ring                      | Drip Return Ring             |
| 26                   | 1                    | 01.0632               | Ventilgehäuse                 | Valve Casing                 |
| ••27                 | 6                    | 07.1650               | Ventilsitz                    | Valve Seat                   |
| ••28                 | 6                    | 07.2173               | Ventilplatte                  | Valve Plate                  |
| ••29                 | 6                    | 07.2544               | Ventilfeder                   | Valve Spring                 |
| ••30                 | 6                    | 07.2157               | Federspannschale              | Spring Tension Cap           |
| ••31                 | 6                    | 06.0943               | O-Ring                        | O-Ring                       |
| 32                   | 6                    | 07.2117               | Stopfen                       | Plug                         |
| ••33                 | 6                    | 06.0944               | O-Ring                        | O-Ring                       |
| 34                   | 8                    | 21.0356               | Innensechskantschraube        | Hexagon Screw                |
| 38                   | 2                    | 07.0608               | Stopfen G3/8                  | Plug G3/8                    |
|                      |                      | 00.5726               | Antrieb kpl. (1-21,23A,34)    | Gear Assy (1-21,23A,34)      |
|                      |                      | 00.6085               | Pumpenkopf kpl. (23/24-33/38) | Pump Head Assy (23/24-33/38) |
|                      |                      | 00.1909               | Ventil kpl. (27-30)           | Valve Assy (27-30)           |
| •                    |                      | 14.0516               | Rep. Satz Dichtungen          | Seal Repair Kit              |
| ••                   |                      | 14.0687               | Rep. Satz Ventile             | Valve Repair Kit             |

Bei Bestellung von Ersatzteilen bitte Bestell-Nr., Pumpen-Nr. und -type angeben  
When ordering please state Code No., Pump Model and Pump Serial No.



Technische Änderungen vorbehalten  
 Subject to change

**NP10/7-140V**