

Ersatzteilverzeichnis NP25

Spare Parts List

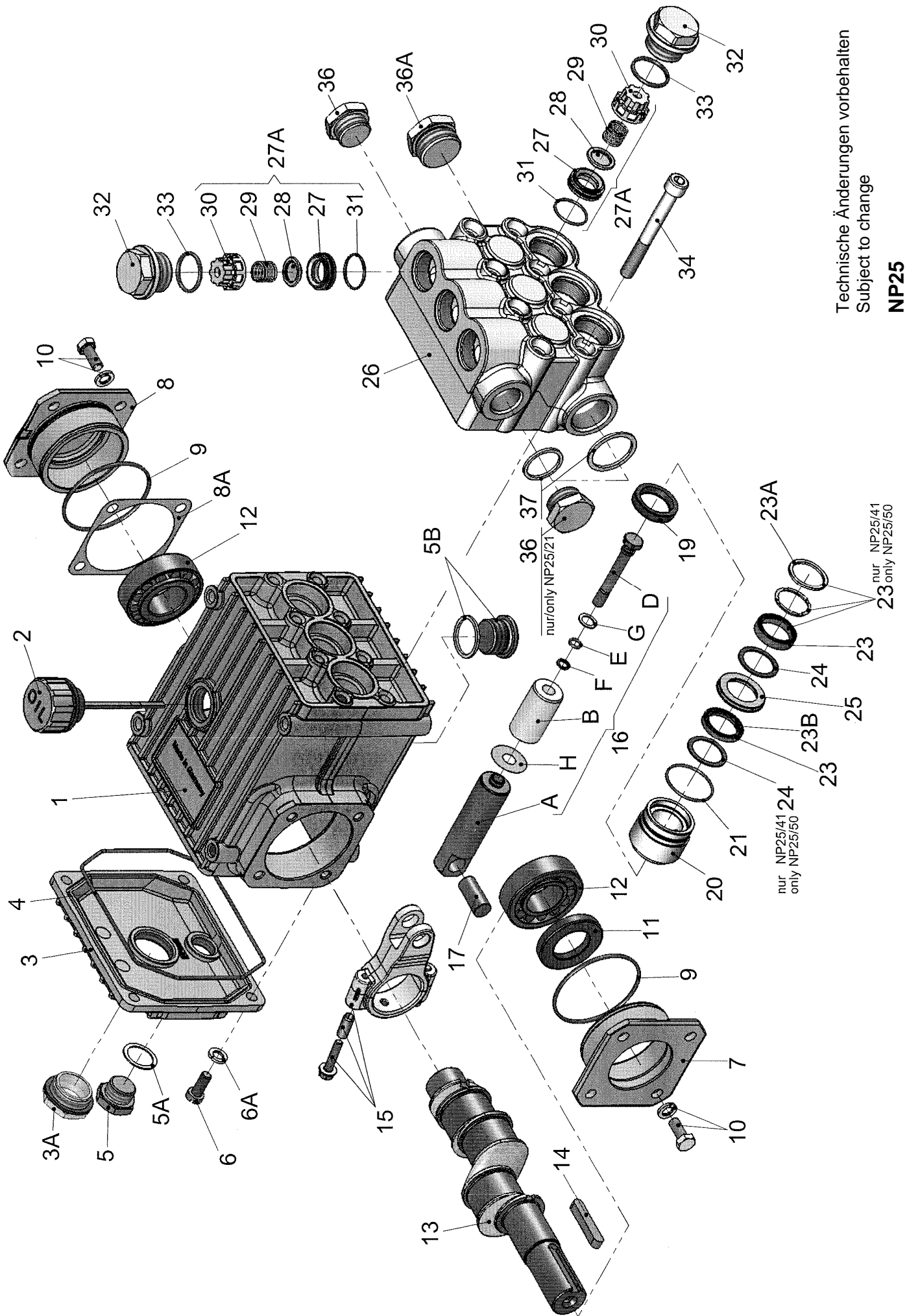
Lfd. Nr. Item No.	Stückzahl No. Off	Best.-Nr. Code No.	Benennung	Description
1	1	01.0599	Antriebsgehäuse	Crankcase
2	1	00.3090	Ölmeßstab	Oil Dipstick
3	1	03.0243	Getriebedeckel	Crankcase Cover
3A	1	00.2416	Ölschauglas kpl.	Oil Sight Glass Assy
4	1	06.1005	O-Ring	O-Ring
5	1	07.0705	Stopfen G1/2	Plug G1/2
5A	1	06.0282	Dichtung G1/2	Gasket G1/2
5B	1	00.4510	Stopfen kpl.	Plug Assy
6	4	21.0026	Zylinderschraube	Cylinder Screw
6A	4	07.2994	Federring	Spring Washer
7	1	03.0339	Lagerdeckel	Bearing Cover
8	1	03.0350	Lagerdeckel	Bearing Cover
8A	1-3	07.4455	Paßscheibe	Fitting Disc
8B	1	07.4456	Paßscheibe	Fitting Disc
9	2	06.0058	O-Ring	O-Ring
10	8	21.0034	Sechskantschraube	Hexagon Screw
11	1	06.0287	Radialwellendichtring	Radial Shaft Seal
12	2	05.0202	Kegelrollenlager	Taper Roller Bearing
13	1	11.0625	Kurbelwelle NP25/21, /30, /41	Crankshaft NP25/21, /30, /41
13	1	11.0626	Kurbelwelle NP25/25, /38, /50	Crankshaft NP25/25, /38, /50
14	1	07.3522	Paßfeder	Fitting Key
15	3	00.2458	Gleitlagerpleuel kpl.	Connecting Rod Assy
16	3	00.5879	Plunger kpl. Ø18 NP25/21, /25	Plunger Assy Ø18 NP25/21, /25
16	3	00.5952	Plunger kpl. Ø22 NP25/30, /38	Plunger Assy Ø22 NP25/30, /38
16	3	00.5880	Plunger kpl. Ø25 NP25/41, /50	Plunger Assy Ø25 NP25/41, /50
16A	3	11.0772	Plunger	Plunger
16B	3	11.0575	Plungerrohr NP25/21, /25	Plunger Pipe NP25/21, /25
16B	3	11.0576	Plungerrohr NP25/30, /38	Plunger Pipe NP25/30, /38
16B	3	11.0574	Plungerrohr NP25/41, /50	Plunger Pipe NP25/41, /50
16D	3	21.0338	Spannschraube	Tension Screw
16E	3	06.0113	O-Ring	O-Ring
16F	3	06.0114	Stützring	Support Ring
16G	3	06.0275	Kupferdichtring	Copper Gasket
16H	3	07.3723	Ölabstreifer	Oil Scraper
17	3	11.0739	Kreuzkopfbolzen	Crosshead Pin
•+o19	3	06.1569	Radialwellendichtring	Radial Shaft Seal
20	3	07.4513	Dichtungsaufnahme NP25/21, /25	Seal Adaptor NP25/21, /25
20	3	07.4703	Dichtungsaufnahme NP25/30, /38	Seal Adaptor NP25/30, /38
20	3	07.4704	Dichtungsaufnahme NP25/41, /50	Seal Adaptor NP25/41, /50
•+o21	3	06.0277	O-Ring	O-Ring
•23	6	06.1174	Nutring NP25/21, /25	Grooved Seal NP25/21, /25
+23	3	00.2460	Nutringdichtsatz NP25/30, /38	Grooved Seal Packing NP25/30, /38
o23	3	06.1309	Nutring NP25/41, /50	Grooved Seal NP25/41, /50
23A	3	07.2691	Distanzscheibe NP25/30, /38	Spacer Disc NP25/30, /38
+23B	3	06.1304	Nutring LRF NP25/30, /38	Grooved Seal NP25/30, /38
o23B	3	06.1310	Nutring LRF NP25/41, /50	Grooved Seal NP25/41, /50
•24	3	07.3104	Stützring NP25/21, /25	Support Ring NP25/21, /25
+24	3	07.2694	Stützring NP25/30, /38	Support Ring NP25/30, /38
o24	6	07.2695	Stützring NP25/41, /50	Support Ring NP25/41, /50
25	3	07.2697	Leckagerückfuhring NP25/21, /25	Drip-Return Ring NP25/21, /25
25	3	07.2699	Leckagerückfuhring NP25/30, /38	Drip-Return Ring NP25/30, /38
25	3	07.2700	Leckagerückfuhring NP25/41, /50	Drip-Return Ring NP25/41, /50
26	1	01.0886	Ventilgehäuse NP25/21, /25	Valve Casing NP25/21, /25
26	1	01.0600	Ventilgehäuse NP25/30, /38, /41, /50	Valve Casing NP25/30, /38, /41, /50
27A	6	00.5881	Ventil kpl. NP25/21, /25	Valve Assy NP25/21, /25
27A	6	00.2946	Ventil kpl. NP25/30, /38, /41, /50	Valve Assy NP25/30, /38, /41, /50
•27	6	07.4511	Ventilsitz NP25/21, /25	Valve Seat NP25/21, /25
oo27	6	07.2702	Ventilsitz NP25/30, /38, /41, /50	Valve Seat NP25/30, /38, /41, /50
•28	6	07.4512	Ventilplatte NP25/21, /25	Valve Plate NP25/21, /25
oo28	6	07.3913	Ventilplatte NP25/30, /38, /41, /50	Valve Plate NP25/30, /38, /41, /50
•29	6	07.4453	Ventilfeder NP25/21, /25	Valve Spring NP25/21, /25
oo29	6	07.3585	Ventilfeder NP25/30, /38, /41, /50	Valve Spring NP25/30, /38, /41, /50
•30	6	07.2157	Federspannschale NP25/21, /25	Spring Tension Cap NP25/21, /25
oo30	6	07.2705	Federspannschale NP25/30, /38, /41, /50	Spring Tension Cap NP25/30, /38, /41, /50
•31	6	06.1164	O-Ring NP25/21, /25	O-Ring NP25/21, NP25/25
oo31	6	06.0250	O-Ring NP25/30, NP25/38, /41, /50	O-Ring NP25/30, NP25/38, /41, /50
32	6	07.4449	Stopfen M24x1.5 NP25/21, /25	Plug M24x1.5 NP25/21, /25
32	6	07.2809	Stopfen M30x1.5 NP25/30, /38, /41, /50	Plug M30x1.5 NP25/30, /38, /41, /50
•33	6	06.1563	O-Ring NP25/21, NP25/25	O-Ring NP25/21, NP25/25
oo33	6	06.0251	O-Ring NP25/30, NP25/38, /41, /50	O-Ring NP25/30, /38, /41, /50
34	8	21.0330	Innensechskantschraube	Hexagon Socket Screw
36	1	07.1001	Stopfen G3/4 NP25/21, /25, /30, /38, /41, /50	Plug G3/4 NP25/21, /25, /30, /38, /41, /50
36A	1	07.1008	Stopfen G1 NP25/30, /38, /41, /50	Plug G1 NP25/30, /38, /41, /50
36A	1	07.3158	Stopfen G1/2 NP25/21, /25	Plug G1/2 NP25/21, /25

Austauschbaugruppen und Reparatursätze / Assembled Replacement Parts & Repair Kits

Lieferumfang lt. Kennzeichnung im Ersatzteilverzeichnis / Symbols shown in parts list refer to kit contents

1	00.6166	Antrieb kpl. NP25/21 (1-19, 34)	Gear Assy NP25/21 (1-19, 34)	
1	00.6167	Antrieb kpl. NP25/25 (1-19, 34)	Gear Assy NP25/25 (1-19, 34)	
1	00.6168	Antrieb kpl. NP25/30 (1-19, 34)	Gear Assy NP25/30 (1-19, 34)	
1	00.6169	Antrieb kpl. NP25/38 (1-19, 34)	Gear Assy NP25/38 (1-19, 34)	
1	00.6170	Antrieb kpl. NP25/41 (1-19, 34)	Gear Assy NP25/41 (1-19, 34)	
1	00.6171	Antrieb kpl. NP25/50 (1-19, 34)	Gear Assy NP25/50 (1-19, 34)	
1	00.5913	Pumpenkopf kpl. NP25/21, /25 (20-37 ohne 34)	Pump Head Assy NP25/21, /25 (20-37 w/o 34)	
1	00.6163	Pumpenkopf kpl. NP25/30, /38 (20-37 ohne 34)	Pump Head Assy NP25/30, /38 (20-37 w/o 34)	
1	00.6164	Pumpenkopf kpl. NP25/41, /50 (20-37 ohne 34)	Pump Head Assy NP25/41, /50 (20-37 w/o 34)	
•	1	14.0734	Rep. Satz Dichtungen NP25/21, /25	Seal Repair Kit NP25/21, /25
+	1	14.0746	Rep. Satz Dichtungen NP25/30, /38	Seal Repair Kit NP25/30, /38
o	1	14.0732	Rep. Satz Dichtungen NP25/41, /50	Seal Repair Kit NP25/41, /50
••	1	14.0733	Rep. Satz Ventile NP25/21, /25	Valve Repair Kit NP25/21, /25
oo	1	14.0397	Rep. Satz Ventile NP25/30, /38, /41, /50	Valve Repair Kit NP25/30, /38, /41, /50

Bei Bestellung von Ersatzteilen bitte Bestell-Nr., Pumpen-Nr. und -type angeben.
When ordering please state Code No., Pump Model and Pump Serial No.



Technische Änderungen vorbehalten
 Subject to change

NP25