



Leistungsbereich - Performance

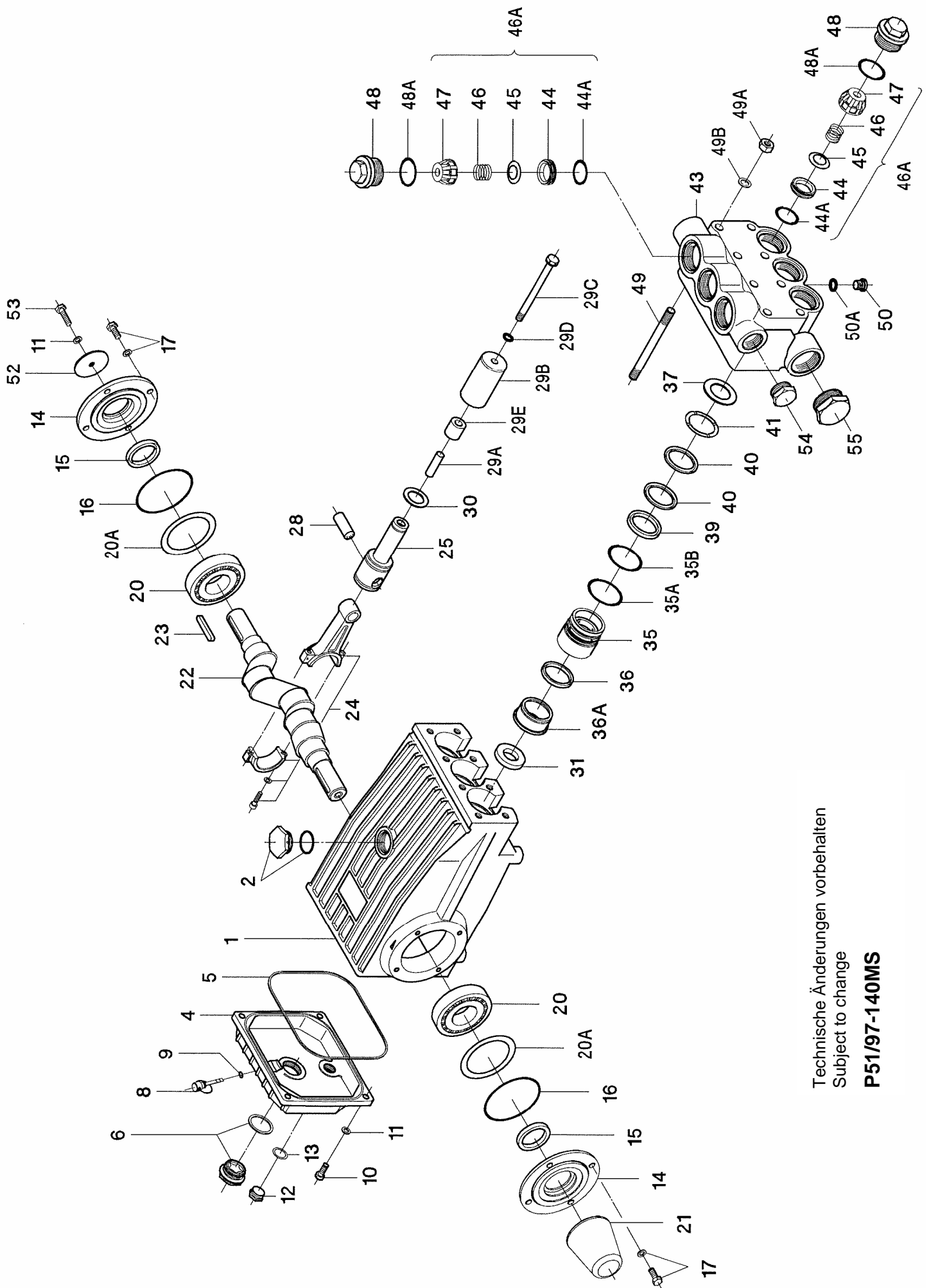
| Type | Best.-Nr. | Leistungs- aufnahme | Überdruck max. | Drehzahl max. | Förder- menge max. | Wasser temp. max. | Plunger -Ø | Hub | Gewicht ca. | NPSHR |
|------------|-----------|------------------------|-------------------|-------------------|--------------------------|-------------------------|-----------------|--------|-------------------|------------------|
| | Code No. | Power Consump. | Pressure max. | RPM max. | Output max. | Water- Temp. max. | Plunger dia. | Stroke | Weight approx. | NPSH Required |
| | | kW | bar | min ⁻¹ | l/min | °C | mm | mm | kg | mWs |
| P51/97-140 | 00.5574 | 26.8 | 140 | 1000 | 97.3 | 60 | 32 | 42 | 57 | 7.8 |

Für Inbetriebnahme, Wartung, Sicherheitsvorschriften und Instandsetzung beachten Sie die Betriebsanleitung der Standardpumpen.

Please refer to the operating instructions for the standard pumps with regard to operation, maintenance, safety guidelines and repair.

| Lfd. Nr. Item No. | Stückzahl No. Off | Best.-Nr. Code No. | Benennung | Description |
|----------------------|----------------------|-----------------------|--|--|
| 1 | 1 | 01.0608 | Antriebsgehäuse | Crankcase |
| 2 | 1 | 00.2914 | Ölauffüllstopfen kpl. | Oil Filler Plug Assy |
| 4 | 1 | 03.0274 | Getriebedeckel | Crankcase Cover |
| 5 | 1 | 06.0103 | O-Ring zu 4 | O-Ring for 4 |
| 6 | 1 | 00.2416 | Ölschauglas kpl. | Oil Sight Glass Assy |
| 8 | 1 | 00.4502 | Ölmeßstab kpl. | Oil Dipstick Assy |
| 9 | 1 | 06.0053 | O-Ring zu 8 | O-Ring for 8 |
| 10 | 4 | 21.0026 | Zylinderschraube | Cylinder Screw |
| 11 | 5 | 07.2994 | Federring | Spring Ring |
| 12 | 1 | 07.0705 | Stopfen G1/2 | Plug G1/2 |
| 13 | 1 | 06.0282 | Dichtung | Gasket |
| 14 | 2 | 03.0137 | Lagerdeckel | Bearing Cover |
| 15 | 2 | 06.0101 | Radialwellendichtring | Radial Shaft Seal |
| 16 | 2 | 06.0104 | O-Ring zu 14 | O-Ring for 14 |
| 17 | 8 | 21.0034 | Sechskantschraube | Hexagon Screw |
| 20 | 2 | 05.0096 | Kegelrollenlager | Taper Roller Bearing |
| 20A | 1-3 | 07.0789 | Paßscheibe | Fitting Disc |
| 20B | 1-3 | 07.2844 | Paßscheibe | Fitting Disc |
| 21 | 1 | 07.4563 | Wellenschutz | Shaft Protector |
| 22 | 1 | 11.0657 | Kurbelwelle | Crankshaft |
| 23 | 1 | 07.3188 | Paßfeder | Fitting Key |
| 24 | 3 | 00.4391 | Gleitlagerpleuel kpl. | Connecting Rod Assy |
| 25 | 3 | 00.4392 | Kreuzkopf kpl. | Crosshead / Plunger Assy |
| 28 | 3 | 11.0659 | Kreuzkopfbolzen | Crosshead Pin |
| 29A | 3 | 07.2712 | Zentrierhülse | Centring Sleeve |
| 29B | 3 | 11.0244 | Plungerrohr | Plunger Pipe |
| 29C | 3 | 07.2714 | Spannschraube | Tensioning Screw |
| 29D | 3 | 06.0467 | Cu-Dichtring | Copper Ring |
| 29E | 3 | 07.3205 | Distanzrohr | Spacer Pipe |
| 30 | 3 | 07.3095 | Olabstreifer | Oil Scraper |
| 31 | 3 | 06.0270 | Radialwellendichtring | Radial Shaft Seal |
| 35 | 3 | 07.3771 | Dichtungshülse | Seal Sleeve |
| •35A | 3 | 06.0105 | O-Ring | O-Ring |
| •35B | 3 | 06.0221 | O-Ring | O-Ring |
| •36 | 3 | 06.0239 | Nutring | Grooved Ring |
| 36A | 3 | 07.3772 | Druckring | Pressure Ring |
| 37 | 3 | 07.3774 | Stützscheibe | Support Disc |
| 39 | 3 | 07.0782 | Druckring | Pressure Ring |
| •40 | 6 | 06.0240 | Dachmanschette | V-Sleeve |
| 41 | 3 | 07.3773 | Stützring | Support Ring |
| 43 | 1 | 01.0800 | Ventilgehäuse | Valve Casing |
| ••44 | 6 | 07.2679 | Ventilsitz | Valve Seat |
| ••44A | 6 | 06.0107 | O-Ring | O-Ring |
| ••45 | 6 | 07.2680 | Ventilplatte | Valve Plate |
| ••46 | 6 | 07.2758 | Ventilfeder | Valve Spring |
| ••47 | 6 | 07.2682 | Federspannschale | Spring Tension Cap |
| 48 | 6 | 07.3655 | Stopfen | Plug |
| ••48A | 6 | 06.0253 | O-Ring | O-Ring |
| 49 | 8 | 21.0273 | Stiftschraube | Stud Bolt |
| 49A | 8 | 07.0988 | Sechskantmutter | Hexagon Nut |
| 49B | 8 | 07.2707 | Scheibe | Disc |
| 50 | 1 | 07.1000 | Stopfen G1/4 | Stopfen G1/4 |
| 50A | 1 | 06.0108 | Cu-Dichtring | Copper Ring |
| 52 | 1 | 07.0796 | Scheibe für Kurbelwelle | Disc for Crankshaft |
| 53 | 1 | 21.0259 | Sechskantschraube | Hexagon Screw |
| 54 | 1 | 07.3160 | Verschlußstopfen G1 | Plug G1 |
| 55 | 1 | 07.3162 | Verschlußstopfen G1 1/2 | Plug G1 1/2 |
| | 1 | 00.4622 | Antrieb kpl. (1-29A/30/31/49/49A-B/52/53) | Crankcase Assy (1-29A/30/31/49/49A-B/52/53) |
| | 1 | 00.5141 | Pumpenkopf kpl. (43-48A/50/50A/54/55) | Pumphead Assy (43-48A/50/50A/54/55) |
| • | 6 | 00.2412 | Ventil kpl. (44-47) | Valve Assy (44-47) |
| •• | 1 | 14.0682 | Rep. Satz Dichtungen | Seal Repair Kit |
| •• | 1 | 14.0394 | Rep. Satz Ventile | Valve Repair Kit |

Bei Bestellung von Ersatzteilen bitte Bestell-Nr., Pumpen-Nr. und -type angeben.
When ordering please state Code No., Pump Model and Pump Serial No.



Technische Änderungen vorbehalten
 Subject to change
P51/97-140MS