

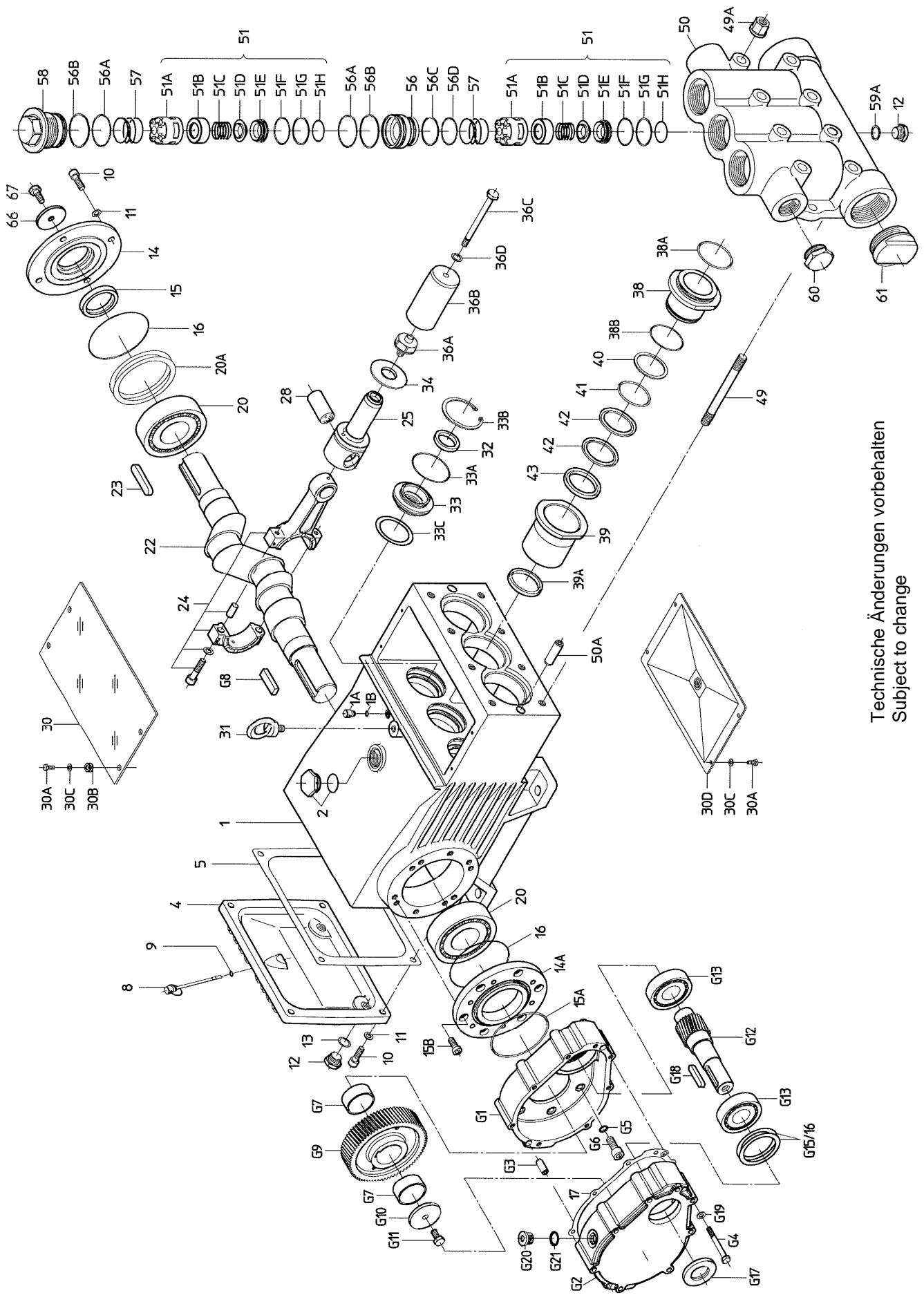
Ersatzteilverzeichnis P71/250-100GU
Spare Parts List

Best.-Nr.: 00.5903
Code Nr.

| Lfd. Nr. Item No. | Stückzahl No. Off | Best.-Nr. Code No. | Benennung | Description |
|----------------------|----------------------|-----------------------|----------------------------|-----------------------------|
| 1 | 1 | 01.0893 | Antriebsgehäuse | Crankcase |
| 1A | 1 | 07.1655 | Kopf für Ölmesstab | Head for Oil Dipstick |
| 1B | 1 | 06.0053 | O-Ring | O-Ring |
| 2 | 1 | 00.2914 | Ölauffüllstopfen kpl. | Oil Filler Plug Assy |
| 4 | 1 | 03.0198 | Getriebedeckel | Crankcase Cover |
| 5 | 1 | 06.0531 | Dichtung zu 4 | Seal for 4 |
| 8 | 1 | 00.1008 | Ölmeßstab | Oil Dipstick |
| 9 | 1 | 06.0053 | O-Ring zu 8 | O-Ring for 8 |
| 10 | 8 | 21.0400 | Innensechskantschraube | Hexagon Socket Screw |
| 11 | 8 | 07.3196 | Federring | Spring Washer |
| 12 | 3 | 07.0705 | Ablaßstopfen | Drain Plug |
| 13 | 2 | 06.0282 | Dichtung zu 12 | Seal for 12 |
| 14 | 1 | 03.0196 | Lagerdeckel | Bearing Cover |
| 14A | 1 | 20.0258 | Flansch f. Getriebe | Flange for Gear Box |
| 15 | 1 | 06.0514 | Radialwellendichtring | Radial Shaft Seal |
| •15A | 1 | 06.1567 | O-Ring | O-Ring |
| 15B | 6 | 21.0629 | Innensechskantschraube | Hexagon Socket Screw |
| •16 | 2 | 06.0248 | O-Ring zu 14 | O-Ring for 14 |
| •17 | 1 | 06.1568 | Getriebedichtung | Gear Seal |
| 20 | 2 | 05.0118 | Kegelrollenlager | Taper Roller Bearing |
| 20A | 1-5 | 07.1669 | Paßscheibe | Fitting Disc |
| 22 | 1 | 11.0678 | Kurbelwelle | Crankshaft |
| 23 | 1 | 07.1671 | Paßfeder | Fitting Key |
| 24 | 3 | 00.4669 | Gleitlagerpleuel kpl. | Connecting Rod Assy |
| 25 | 3 | 00.4665 | Kreuzkopf kpl. | Crosshead Assy |
| 28 | 3 | 11.0676 | Kreuzkopfbolzen | Crosshead Pin |
| 30 | 1 | 03.0200 | Abdeckplatte | Cover Plate |
| 30A | 8 | 21.0256 | Sechskantschraube | Hexagon Screw |
| 30B | 4 | 08.0132 | Durchführungstülle | Grommet |
| 30C | 8 | 07.3512 | Scheibe | Disc |
| 30D | 1 | 00.4344 | Deckel | Cover |
| 31 | 1 | 07.1628 | Transporthaken | Eye Bolt |
| •32 | 3 | 06.0532 | Radialwellendichtring | Radial Shaft Seal |
| 33 | 3 | 07.1626 | Dichtungsaufnahme | Seal Retainer |
| •33A | 3 | 06.0577 | O-Ring zu 33 | O-Ring for 33 |
| 33B | 3 | 07.1438 | Seegerring zu 33 | Circlip for 33 |
| 33C | 3 | 07.0859 | Paßscheibe | Fitting Disc |
| 34 | 3 | 07.1764 | Ölabstreifer | Oil Scraper |
| 36 | 3 | 00.1347 | Plungerrohr kpl. (36A-36D) | Plunger Pipe Assy (36A-36D) |
| 36A | 3 | 07.1576 | Plungerverschraubung | Plunger Connection |
| 36B | 3 | 11.0451 | Plungerrohr | Plunger Pipe |
| 36C | 3 | 21.0206 | Spannschraube | Tensioning Screw |
| 36D | 3 | 06.0780 | Cu-Dichtring | Copper Ring |
| 38 | 3 | 07.3138 | Dichtungskassette | Seal Case |
| •38A | 3 | 06.1218 | O-Ring zu 38 | O-Ring for 38 |
| •38B | 3 | 06.0800 | O-Ring zu 38 | O-Ring for 38 |
| 39 | 3 | 07.3139 | Dichtungshülse | Seal Sleeve |
| •39A | 3 | 06.0843 | Nutring | Compact Ring |
| 40 | 3 | 07.3030 | Stützscheibe | Support Disc |
| •41 | 3 | 06.1173 | O-Ring | O-Ring |
| •42 | 6 | 06.0803 | Dachmanschette | V-Sleeve |
| 43 | 3 | 07.2257 | Druckring | Pressure Ring |
| 49 | 8 | 21.0298 | Stiftschraube | Stud Bolt |
| 49A | 8 | 07.3070 | Sechskantmutter | Hexagon Nut |
| 50 | 1 | 01.0719 | Ventilgehäuse | Valve Casing |
| 50A | 2 | 07.3066 | Zylinderstift | Cylinder Stud |
| 51A | 6 | 07.3641 | Federspannschale | Spring Tension Cap |
| +51B | 6 | 07.4096 | Ventilfederführung | Valve Spring Guide |
| +51C | 6 | 07.2731 | Ventilfeder | Valve Spring |
| +51D | 6 | 07.3143 | Ventilplatte | Valve Plate |
| +51E | 6 | 07.4109 | Ventilsitz | Valve Seat |
| +51F | 6 | 06.0582 | O-Ring | O-Ring |
| +51G | 6 | 06.0957 | Stützring | Support Ring |
| +51H | 6 | 06.0277 | O-Ring | O-Ring |

| Lfd. Nr. Item No. | Stückzahl No. Off | Best.-Nr. Code No. | Benennung | Description |
|----------------------|----------------------|-----------------------|---|---|
| 56 | 3 | 07.3141 | Ventilaufnahme | Valve Adaptor |
| +56A | 6 | 06.0583 | O-Ring | O-Ring |
| +56B | 6 | 06.0579 | Stützring zu 56A und 58A | Support Ring for 56A, 58A |
| +56C | 3 | 06.0957 | Stützring | Support Ring |
| +56D | 3 | 06.0582 | O-Ring | O-Ring |
| 57 | 6 | 07.3176 | Spannfeder | Tension Spring |
| 58 | 3 | 07.3164 | Stopfen M64x2 | Plug M64x2 |
| 59A | 1 | 06.0102 | Cu-Dichtring zu 12 | Copper Ring for 12 |
| 60 | 1 | 07.1760 | Verschlußstopfen G 1 1/4 | Plug G 1 1/4 |
| 61 | 1 | 07.1763 | Verschlußstopfen G 2 1/2 | Plug G 2 1/2 |
| | 1 | 15.0038 | Montagewerkzeug Ventile | Valve Mounting Aid |
| 00.5592 | | | Getriebe i=3,25; n₁=2300 min⁻¹ | Gear i=3,25; n₁=2300 min⁻¹ |
| G1 | 1 | 01.0897 | Gehäuseuntereil | Casing Bottom |
| G2 | 1 | 01.0898 | Gehäuseoberteil | Casing Top |
| G3 | 2 | 21.0636 | Zylinderstift | Cylindrical Pin |
| G4 | 8 | 21.0637 | Sechskantschraube | Hexagon Screw |
| G5 | 6 | 06.1579 | Usit-Ring | Washer |
| G6 | 6 | 21.0388 | Innensechskantschraube | Hexagon Socket Screw |
| G7 | 2 | 07.4490 | Distanzring | Spacer Ring |
| G8 | 1 | 07.4491 | Passfeder | Fitting Key |
| G9 | 1 | 18.0051 | Zahnrad | Cogwheel |
| G10 | 1 | 07.4492 | Spannplatte | Tension Disc |
| G11 | 1 | 21.0394 | Sechskantschraube | Hexagon Screw |
| G12 | 1 | 11.0775 | Ritzelwelle | Pinion |
| G13 | 2 | 05.0203 | Kugellager | Ball Bearing |
| G15 | 2 | 07.4493 | Paßscheibe | Fitting Disc |
| G16 | 2 | 07.4494 | Paßscheibe | Fitting Disc |
| G17 | 1 | 06.1580 | Wellendichtring | Shaft Seal Ring |
| G18 | 1 | 07.3188 | Passfeder | Fitting Key |
| G19 | 8 | 07.2904 | Unterlegscheibe | Washer |
| G20 | 2 | 07.4495 | Verschlußschraube | Screw Plug |
| G21 | 2 | 06.0868 | Cu-Dichtring | Copper Ring |
| | 1 | 00.5914 | Antrieb kpl. (2x12/1-34/49/49A/50A) | Crankcase Assy (2x12/1-3 4/49/49A/50A) |
| | 1 | 00.4302 | Pumpenkopf (1x12/50-61 ohne 50A) | Pump Head "G" (1x12/50-61 w/o 50A) |
| | 6 | 00.5425 | Ventil kpl. (51A-H) | Valve Assy (51A-H) |
| | 1 | 00.4346 | Plungerwechselsatz (36-43) | Plunger Replacement Kit (36-43) |
| + | 1 | 14.0670 | Rep. Satz Ventile | Valve Repair Kit |
| • | 1 | 14.0735 | Rep. Satz Dichtung | Seal Repair Kit |

Bei Bestellung von Ersatzteilen bitte Bestell-Nr., Pumpen-Nr. und -type angeben
When ordering, please state Code No., Pump Model and Pump Serial No.



Technische Änderungen vorbehalten
 Subject to change

P71/250-100GU